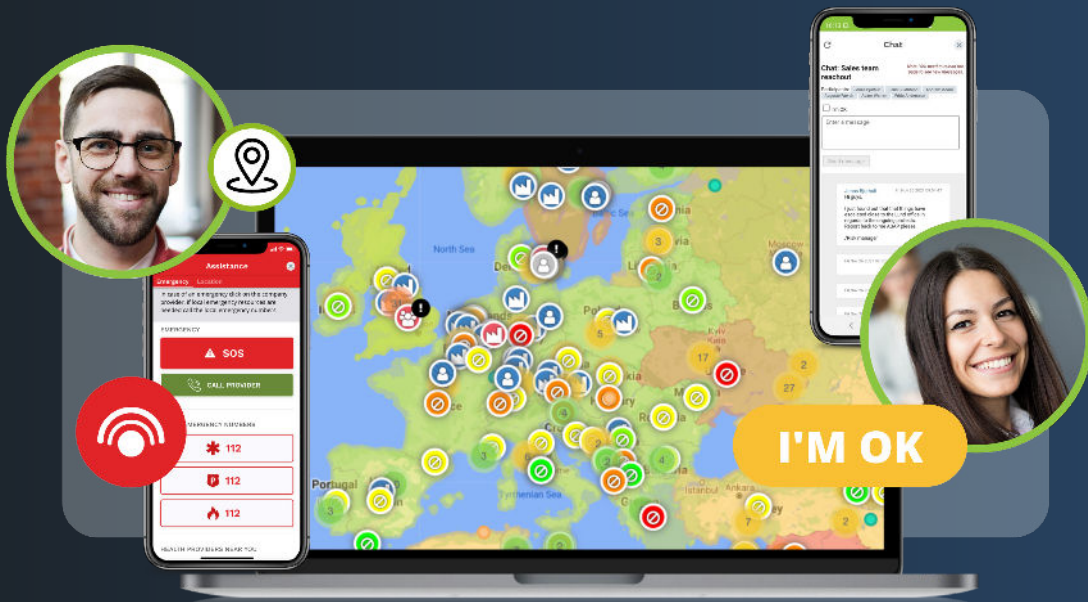




Our technical solution



**Smart technology to safeguard
the modern workforce.**



A complete solution

Technology that simplifies Risk Management

The Safeture platform automates your risk and crisis management through the combined power of information, location and communication.

The system sorts out relevant alerts based on employee location, delivering accurate and reliable risk information to act on.



Information

Take actions based on the best risk intelligence.



Location

Find all your people when necessary.



Communication

Deliver messages even in the most critical times.



The highest security standards

Safeture's Information Security Management System is based on the ISO/IEC 27002:2013 and fully GDPR and CCPA compliant – trusted by large, multinational organizations such as Siemens and the European Central Bank. Protecting your data is our top priority.

Advanced technology, easy to use

One platform. Two interfaces.



Web portal – For administrators

- Dashboard with easy access to an overview of all users.
- Visual map and information layers, enabling quick response when informing, locating and communicating with users.
- Mass communication tool to communicate with individuals or groups of users.
- Real-time global alerts 24/7 from risk intelligence providers of choice.
- Easy access to travel data through the Travel module.
- Analytics and exportable reports.
- Country and city information and risk assessments for over 230 countries/regions.
- Dashboard with an overview of people or locations near high risk alerts.
- Automate alerts based on the location of your company facilities.
- 12 e-learning courses, quizzes and tests to be better prepared for business travels.



Mobile app – For everyone

- Notifications sent directly to your phone.
- Initiate emergency mode.
- Real-time positioning on several privacy levels.
- Real-time global alerts 24/7, based on location.
- Customized emergency number and emergency button connected to assistance.
- Travel itineraries and notifications for flight disruptions or gate changes.
- Check-in, either manually or as an answer to scheduled check-ins by administrators.
- Country information and risk assessments for over 230 countries/regions.
- Medical data base.
- 12 e-learning courses, quizzes and tests to be better prepared for business travels.
- Content automatically translated in over 20 languages.
- Local news, Currency calculator.
- Medical providers, accommodation providers network.
- Embassies and consulates database.

All the features you need

Powerful built-in standard features



Communication

Reliable communication in critical situations.



Travel

Complete travel risk management solution.



Risk Intelligence

Relevant risk information at the right time.



Facility

Alerts for facilities and connected people.



Analytics

Unify data between systems.



E-Learning

Educate and prepare your people.

Alerts: Get notifications of incidents near you.

The Safeture Platform filters out alerts based on your location to present you with relevant risk information. Report back to your manager or assistance provider that you are OK.

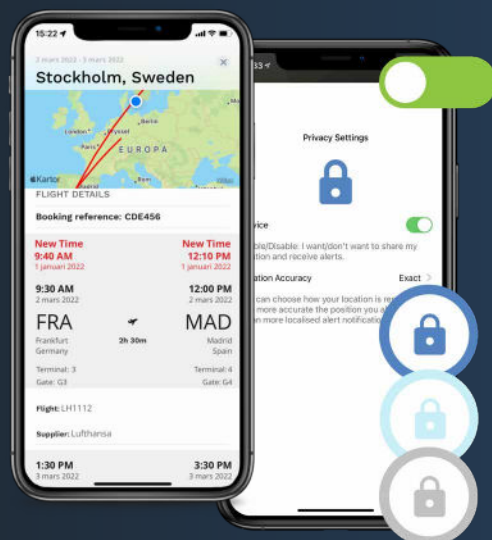


Emergency Button: Help is just a click away.

Click the red SOS button to initiate emergency mode and notify both your organization and your assistance provider of your current location for prompt assistance.

Travel Bookings: All the latest information on your upcoming travels.

Get an overview of all your upcoming travel bookings and notifications of any flight disruption or gate changes. Avoid risk through alerts and information on changed risk levels at your destination.



Privacy Settings: Security and privacy should not be conflicting.

You can easily set your own privacy level in the app. Choose between exact location, city-level, or region/state level, or disable positioning capabilities altogether.

We believe in the power of strong partnerships

The technological hub in the People Risk Management ecosystem

Complete & seamless solution

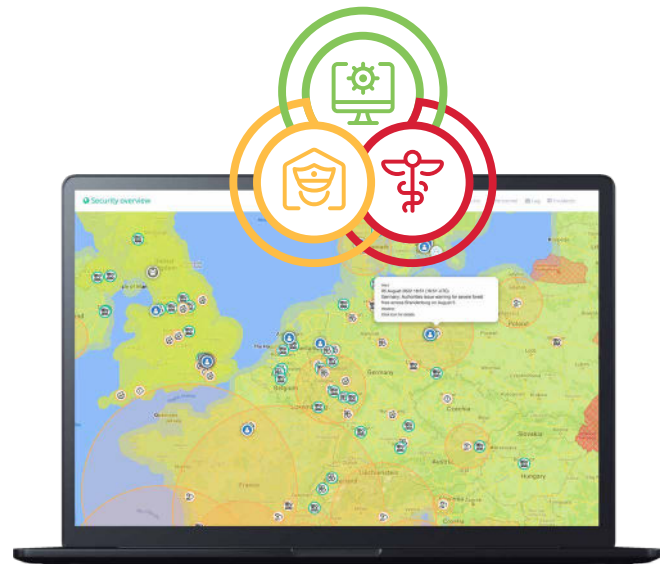
Through partnerships with companies working with security and medical assistance, travel, insurance, and risk intelligence – we can offer a complete and seamless solution to our customers. The ecosystem allows all parties to focus on their core competencies.

24/7 strategic and operational support

Our partners offer strategic and operational support solutions for People Risk Management. They have the capacity to handle worldwide crisis response 24/7 for organizations and its people – to mitigate medical risks through a network of specialists worldwide.

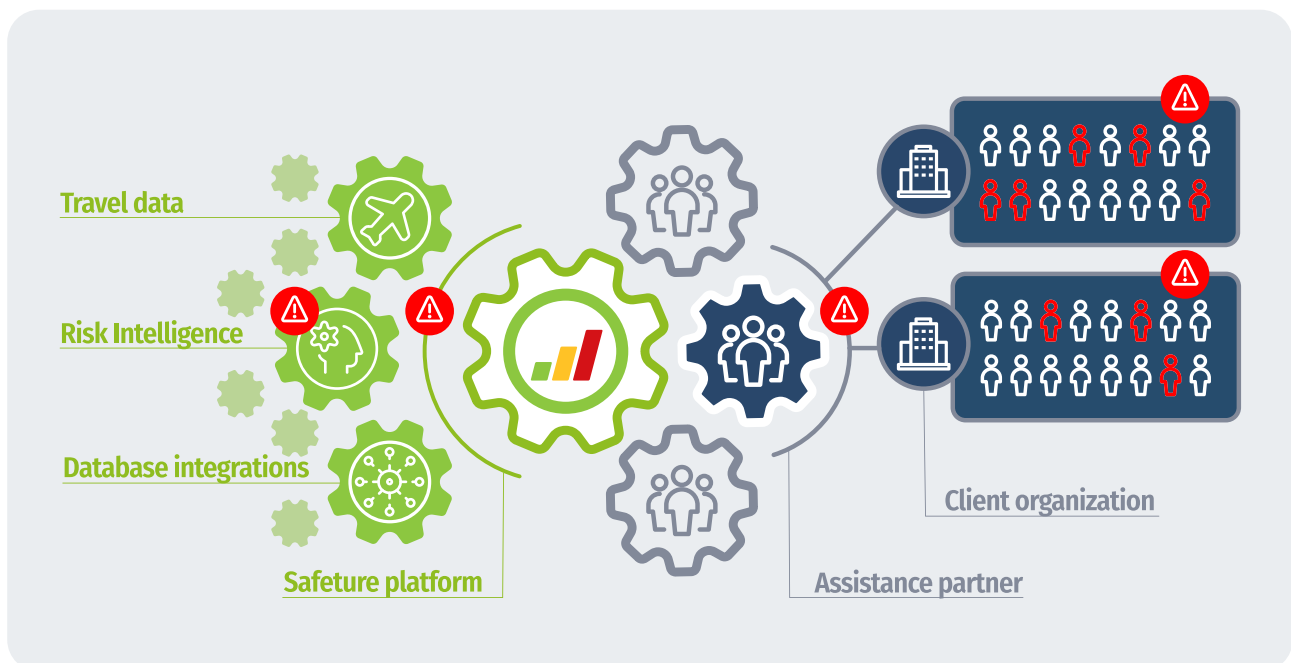
Content-flexible

Our strategic positioning as a stand-alone and flexible platform gives you the freedom to choose what content and data to integrate into the system.



Security overview

Real-time global map overview of the risk situation.



Informed decisions and targeted communication

The Safeture Platform in practice

When something really serious happens, there is always confusion. Sometimes, it is due to too little information about what happened. Sometimes, too much information makes it difficult to judge what is true and what is just rumors.

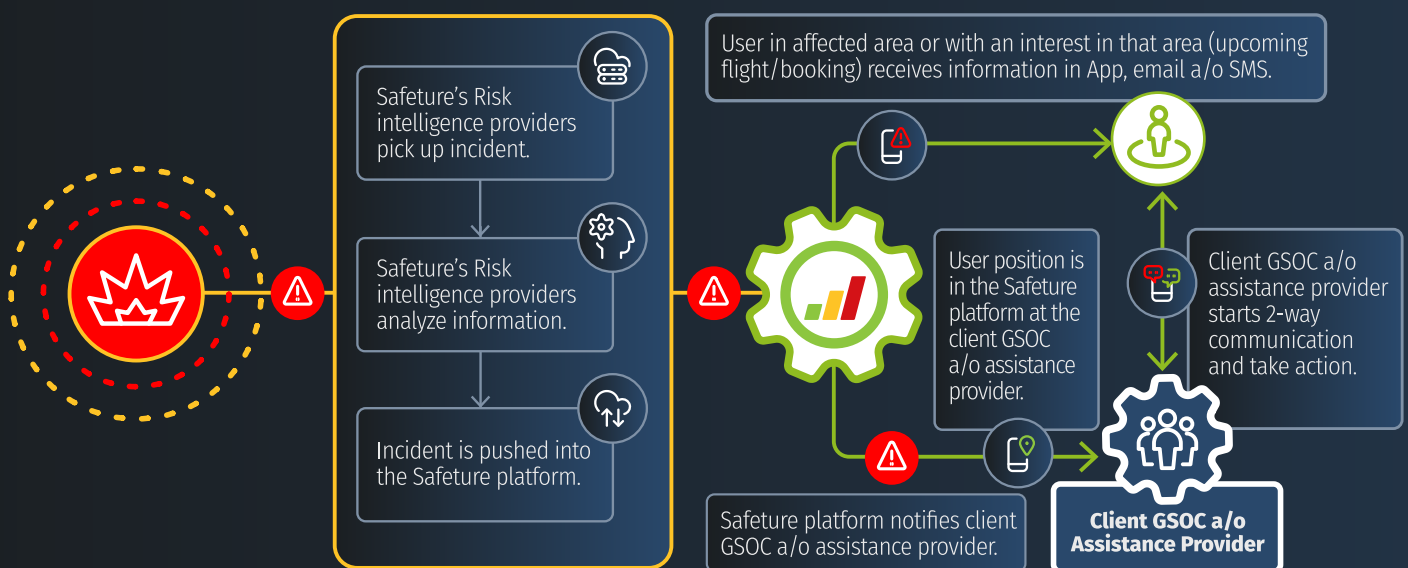
In the platform, professional analysts quickly collect, evaluate and compile all the critical information, the person in charge of security in the organization or assistance provider and the people close to the incident will quickly get the correct information.

With the help of Safeture's unique technical platform, it is easy to locate the people who need help first, communicate with them and continue to inform them of what needs to be done. Safeture's platform provides a very clear overview of the security situation and allows assistance companies to focus on the right people and ensure that they get to safety or get help as soon as possible.

Speed is important in an emergency, but so is the right decision. Safeture's technology platform is an essential tool to protect your organization's most important asset, its people.

Proactive assistance

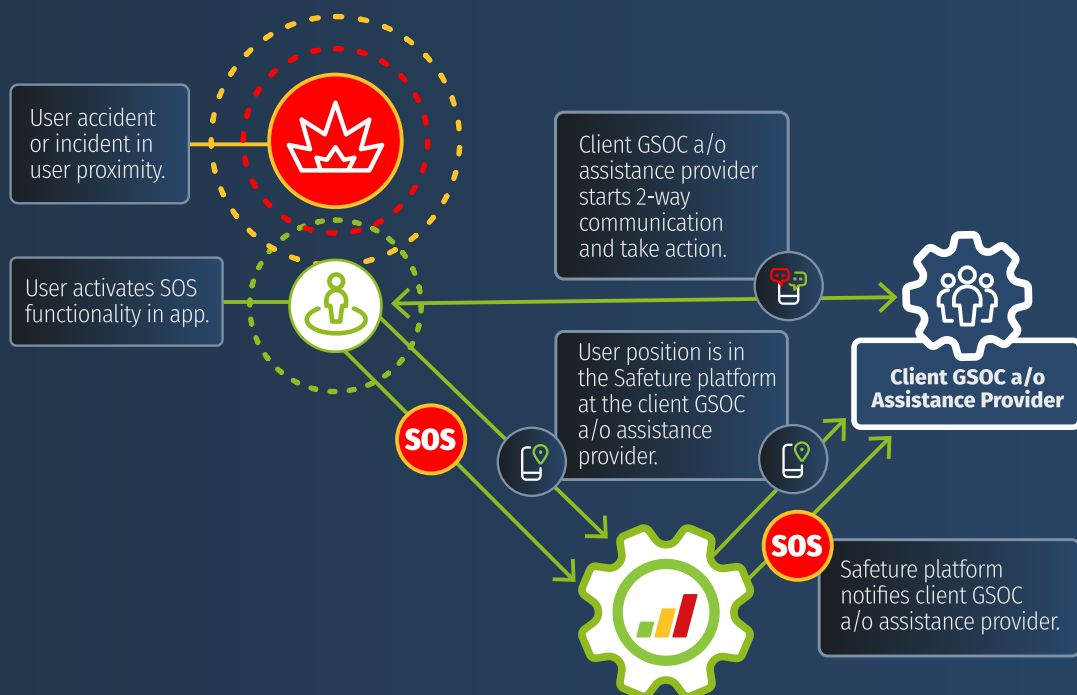
Staying one step ahead is essential for the organization and those outside the office. With proactive assistance, all events are monitored, and if something is believed to affect people, the information is passed on to those affected. This may help to avoid getting into a dangerous situation.

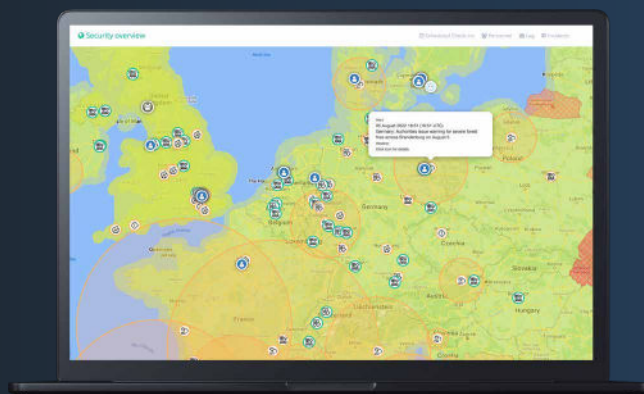




Reactive assistance

Sometimes events happen without warning. In an instant, the situation can become critical and people need immediate help. With one press of the SOS button, the user can be instantly located and assistance work can begin without losing important time. Everyone involved is quickly informed of the situation and what actions need to be taken.





Our promise to you

- State of the art technology.
- Today's best technological solution provider in the market.
- A future product roadmap that guarantees we will be the best technological solution provider also tomorrow.
- Easy to get started.
- Quick and clear onboarding process.
- Dedicated Safeture contact is assigned to each client.
- Straightforward platform activation.

The Safeture company

Safeture is a Swedish SaaS company specializing in innovative technical solutions for a partner working in the field of medical or security. Safeture provides the tech and helps the partner to focus on their core business: to handle safety and risk management for the clients.

Safeture's mission is to build strong relationships with partners and enable them to enhance personal safety and security for individuals, businesses, and organizations.

The Safeture user-friendly platform helps to improve any organization's security by correlating risk and location data for informed decisions and targeted communication.

Today, Safeture's world-leading technology is used by over 4000 companies and organizations to protect what matters most – their people.

Contact us: sales@safeture.com



www.safeture.com